

SVEIN ROUND COFFEE TABLE

INDOOR USE ONLY · SIMPLE ASSEMBLY REQUIRED · MADE IN CHINA

H 45 CM x W 80 CM x D 80 CM · LOAD LIMIT: 20 KG

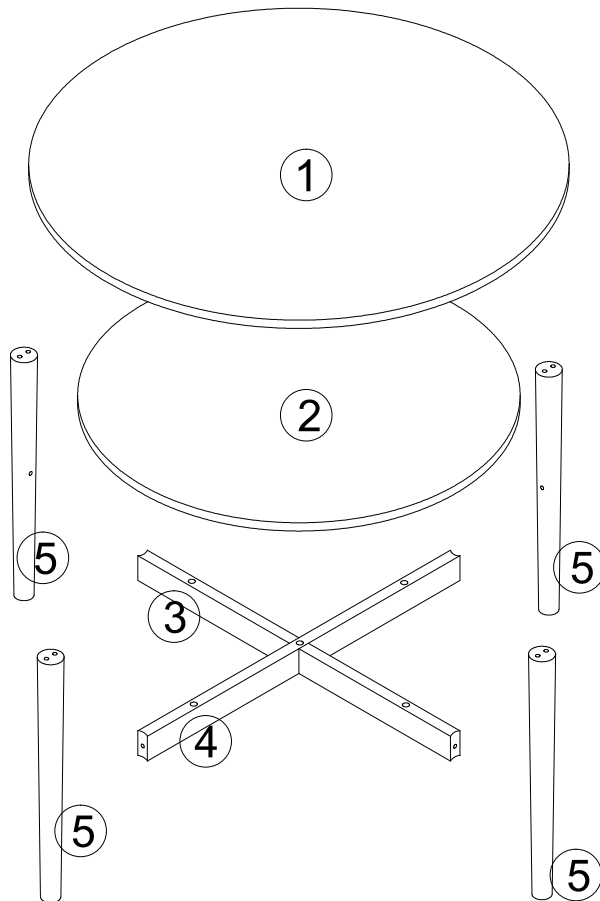
MDF with ash wood and okoume wood veneer. Rubber wood legs.

WARNING Do not stand on product. Do not use as a step ladder. Do not use product unless all bolts, screws and knobs are firmly secured. Only use on even surfaces. Failure to follow these warnings could result in serious injury.

CARE INSTRUCTIONS Wipe clean with a soft, damp cloth. Do not use abrasive materials or solvents. Store in a dry place.

ASSEMBLY INSTRUCTIONS

Please read instructions carefully. Remove all wrapping material, staples and packing straps from the carton. See Parts List and Hardware List for guidance. Be sure you have all parts before you start assembling. Place all wooden furniture parts on a clean and flat soft surface, such as carpet or a rug to prevent from being scratched.



PARTS LIST

1.Top Panel	:1PC
2.Second Shelf	:1PC
3.Upper Support Rail	:1PC
4.Bottom Support Rail	:1PC
5.Solid Wood Leg	:4PCS

HARDWARE LIST

A:Long Bolt	:5PCS
B:Long Allen Bolt	:4PCS
C:Short Allen Bolt	:8PCS
D:Short Bolt	:16PCS
E:Allen Key	:1PC
F:Metal Plate	:4PCS
G:EVA Foot Mat	:4PCS



Ax5



Bx4



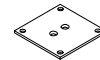
Cx8



Dx16



Ex1



Fx4



Gx4

FOR ASSEMBLY

- Suggest to be assembled by 2 person.
- Never stand on the top of the table.

⚠ WARNING:

Serious or fatal crushing injuries can occur from furniture tip-over. To help prevent tip-over:

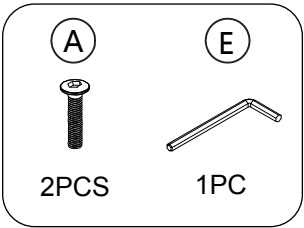
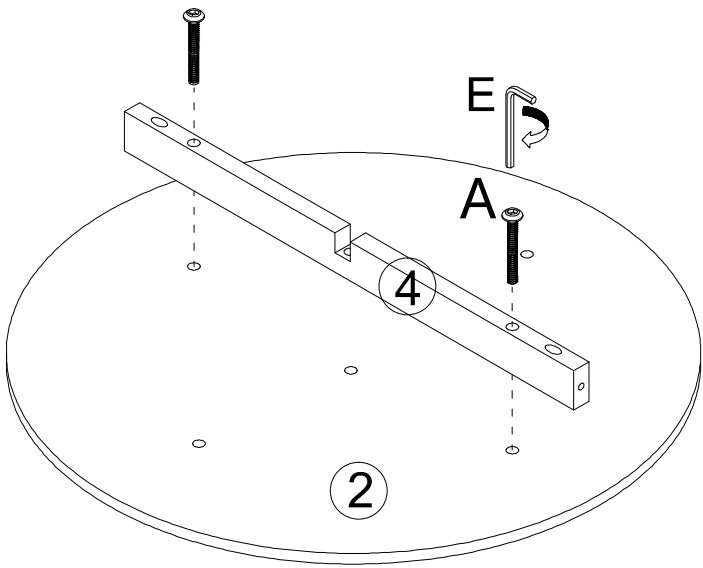
- Unless specifically designed to accommodate, do not set TVs or other heavy object on top of this product.

- Never allow children to climb
- Do not stand on product.
- Do not use as a step ladder.

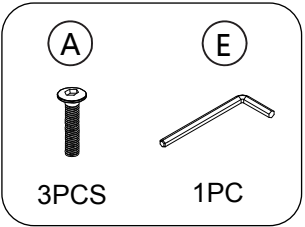
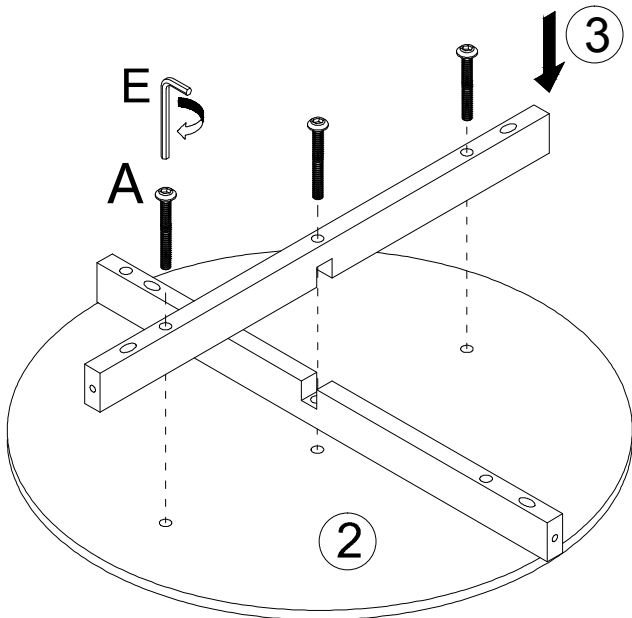
Use of tip-over restraints may only reduce, but not eliminate, the risk of tip-over.

ASSEMBLY INSTRUCTIONS

STEP 1

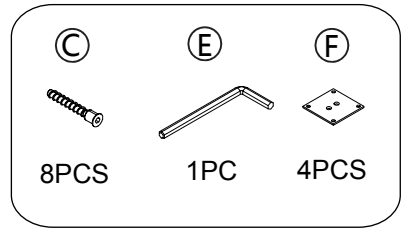
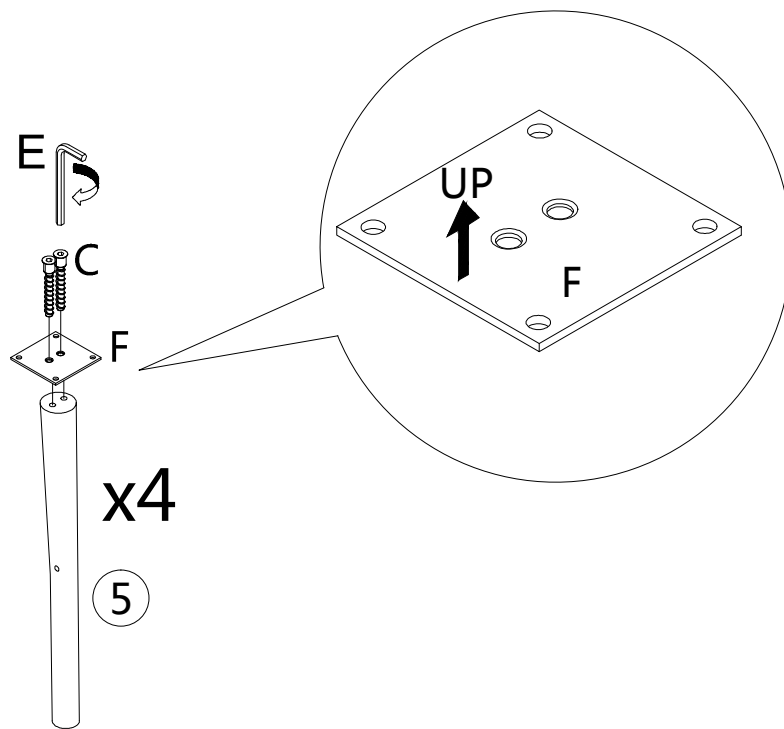


STEP 2

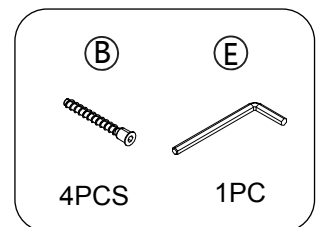
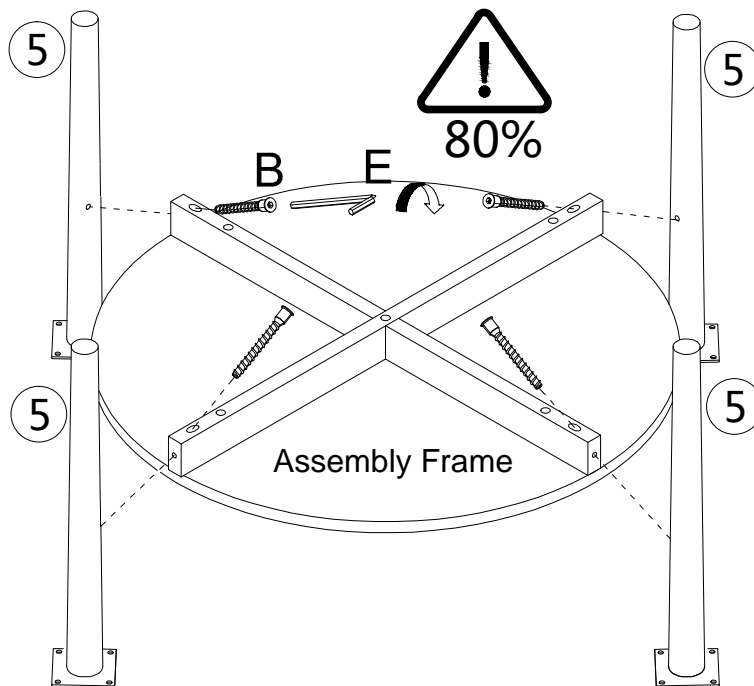


ASSEMBLY INSTRUCTIONS

STEP 3



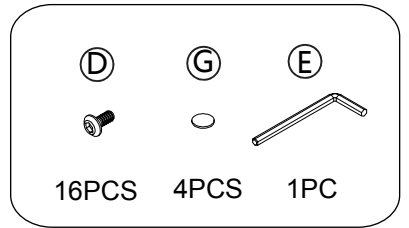
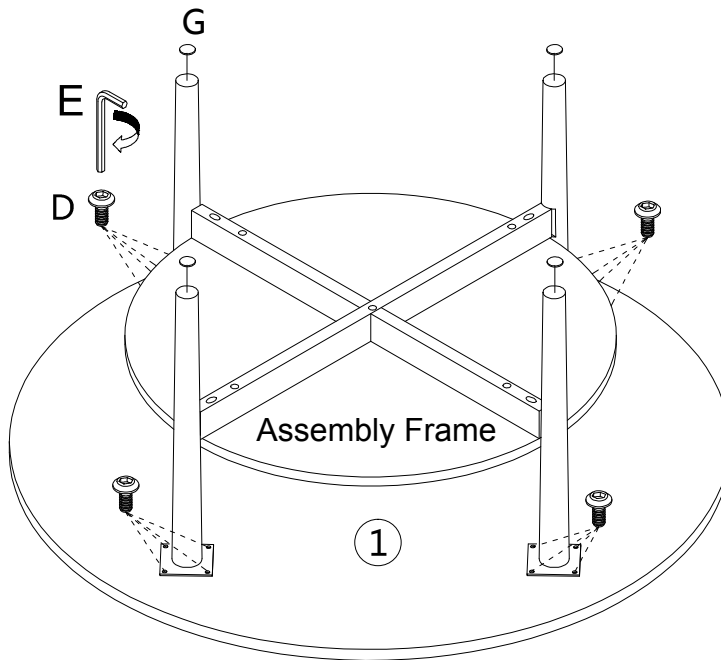
STEP 4



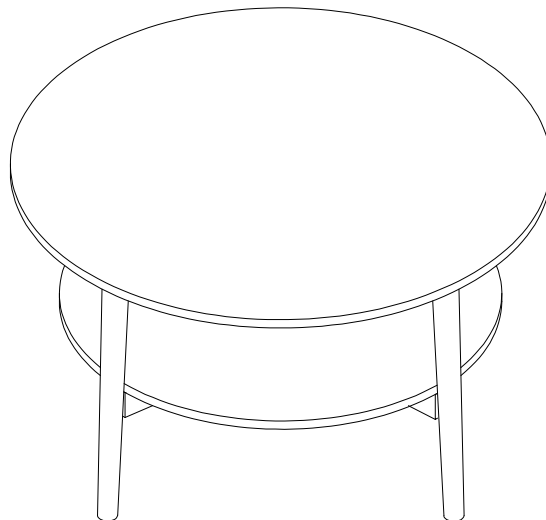
Please do not tighten all screws in this step until both step 4 and step 5 screws are well align.

ASSEMBLY INSTRUCTIONS

STEP 5



STEP 6



Note: Fully tighten all bolts/screws once fully assembled.
Check furniture regularly to ensure all bolts/screws
are secure and tighten any loose bolts/screws.



**SCAN FOR
FURTHER SAFETY
INFORMATION.**