

# Anna Papercraft



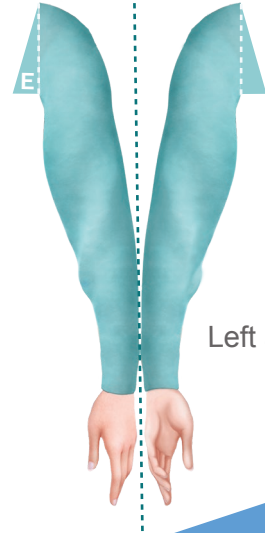
Torso



Back



Right arm



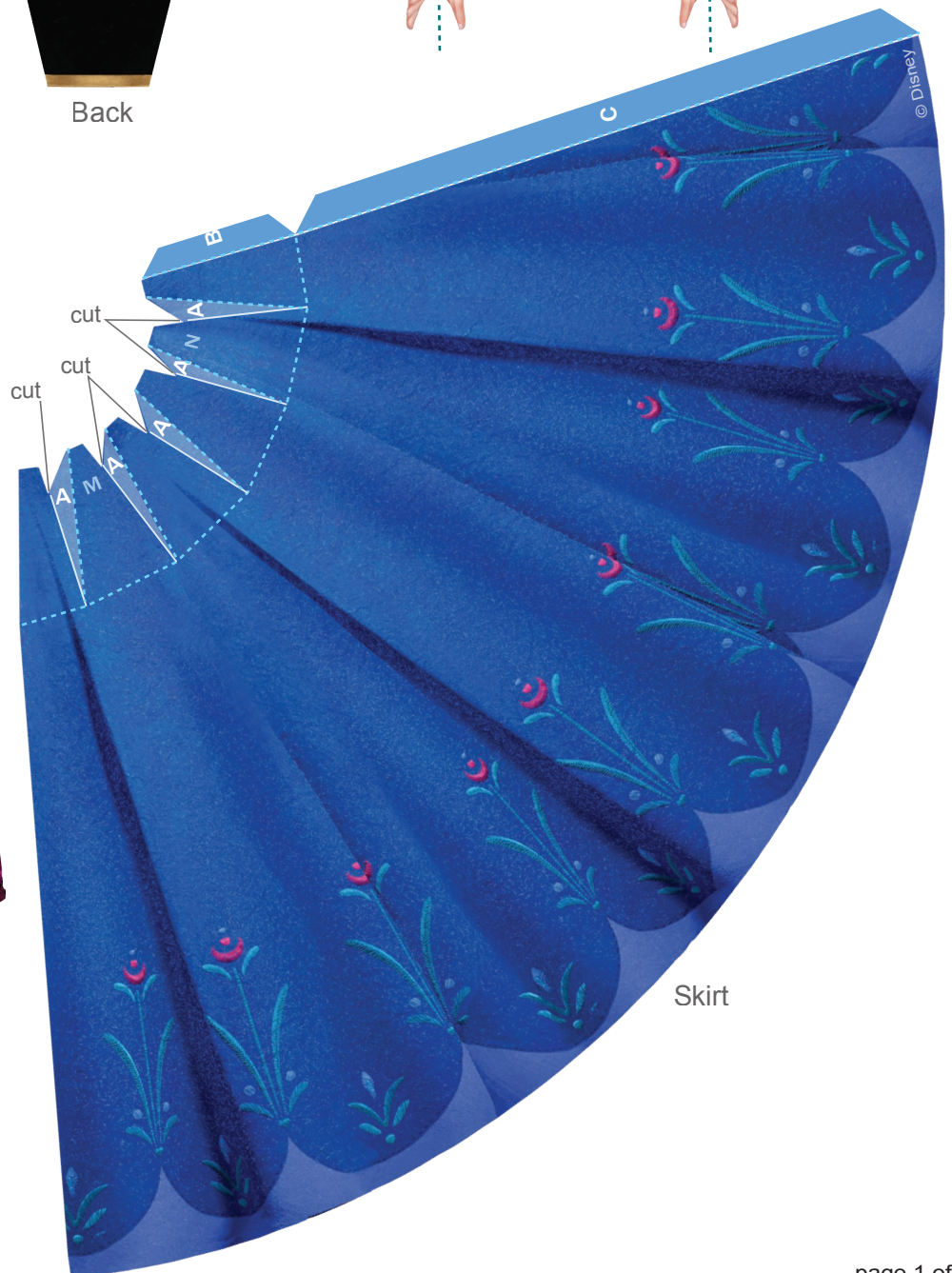
Left arm



Front



Cape front



Skirt

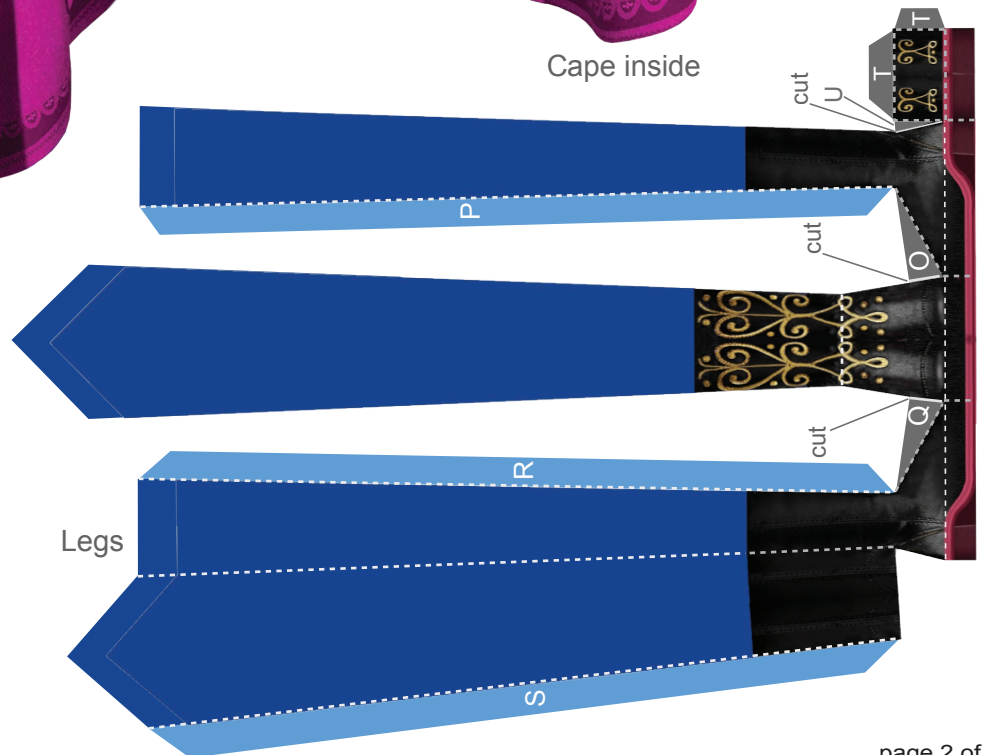




Cape back



Cape inside





## Anna Papercraft

### Instructions

1. Print the template on regular paper or cardstock. Cut out each piece with a craft knife or scissors. Do not cut along the dashed lines -- this is where you will fold the paper.
2. Line up Anna's back with her torso and glue them together so the design is two-sided. After the glue has dried, fold the bottom part of Anna's torso towards you along the blue dashed line. Then, fold Anna's face away from you along the gold line across her shoulders.
3. Take Anna's chest piece and fold along each dashed line. Make each fold away from you. Glue the G tab and F tab to the back, white side of Anna's chest.
4. Spread glue on the H tab of Anna's chest and press it into place on the H area on Anna's torso. Make sure her shoulders are lined up correctly.
5. After the glue dries, add glue to the I, J, K, and L tabs and press them into place. Hold the pieces together until the glue dries. You may need to use a pen or pencil inside her chest area to position the tabs just right.
6. Fold each of Anna's arms and glue them so the design is two-sided. Make sure they are lined up before the glue dries. Attach the arms to each side of Anna's body under each shoulder by gluing the E tab to the E area and D tab to the D area.
7. Cut slits in the top of the skirt along the white lines, opposite of where you fold each A tab. Fold each of the dashed lines at the top of the skirt and each A tab away from you. Starting from left to right with the purple side of the skirt facing you, glue each A tab to the back of the skirt piece next to it to create pleats.
8. When you are finished gluing the A tabs you may find it easier to glue the C tab to the inside of the skirt before gluing the final B tab pleat.
9. Attach Anna's completed torso to her skirt by gluing the white side of the tabs at her waist to the top of the skirt over the areas labeled M and N. The crease on the skirt should be in the back.
10. To put Anna's legs together, make cuts along the solid white lines where indicated and fold along all the dashed lines. Start by gluing tab O to the back side of the boots, then glue tab P to the backside of the legs. Work your way around the legs by gluing Q, R, and S. Finish the legs by gluing tabs T and U to the back of the heels. Run glue along the very top edge of the legs and slide them into place under Anna's skirt.
11. If you choose to put the cape on Anna, glue the cape inside and the cape back together, so the design is two-sided. Glue the cape front to the front of Anna, matching up the hair. Glue the cape to the back of Anna matching up the head and shoulders. Glue the shoulders and sides of the front and back cape together.





## Frozen Door Hanger

Print the page on regular paper or cardstock and cut out the door hanger. Fold it in half and glue it so the design is now 2-sided. Cut the hole where the hanger will slip on to the door handle. Hang whichever side fits your mood!

fold



fold



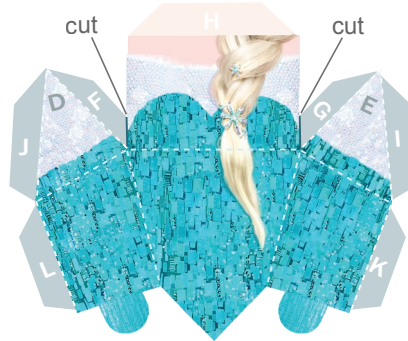
# Elsa Papercraft



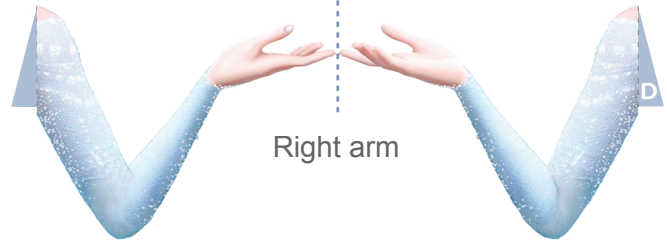
Torso



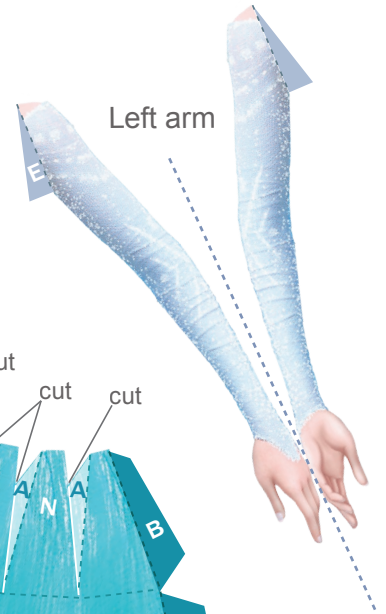
Back



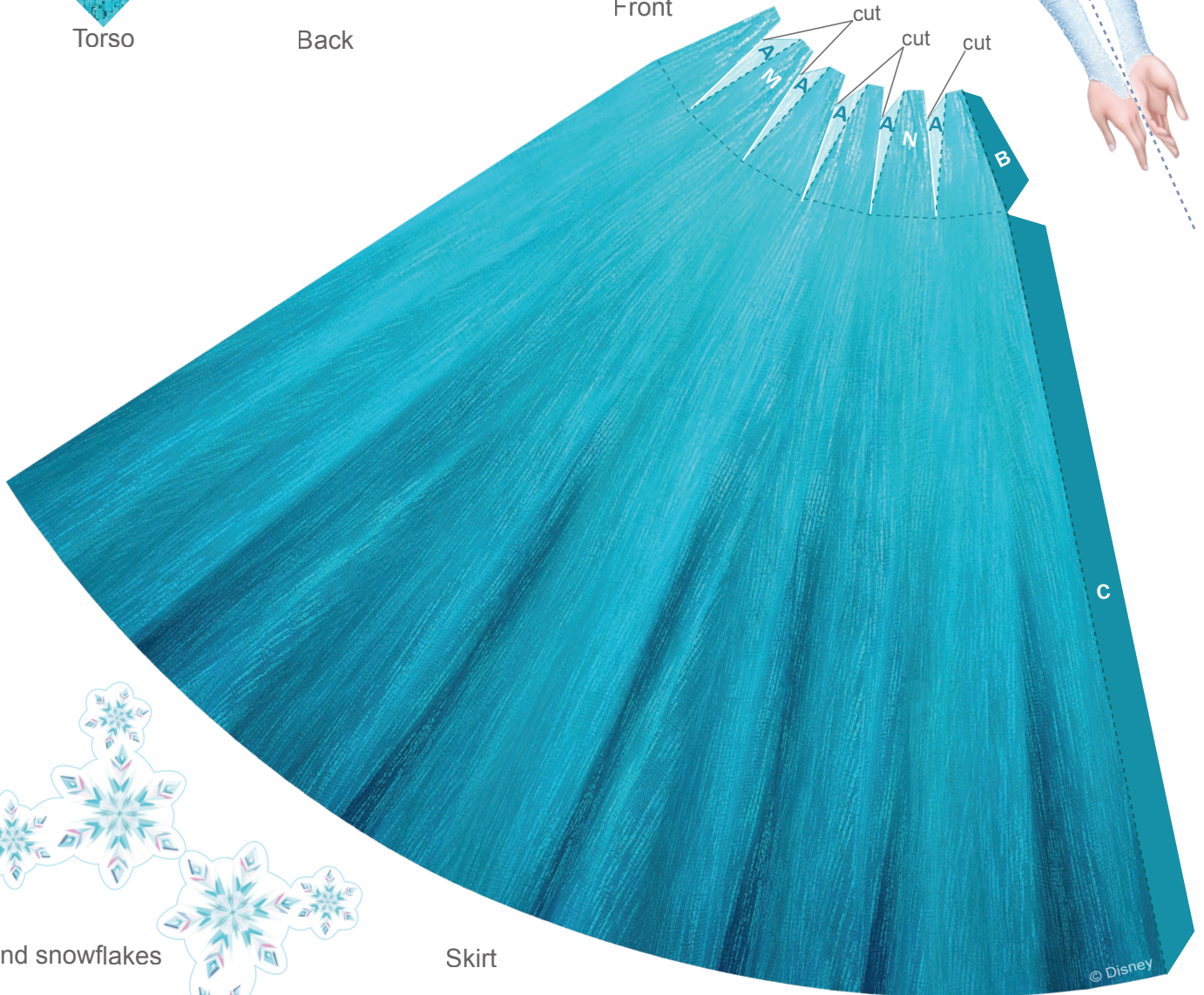
Front



Right arm



Left arm



Skirt



Hand snowflakes

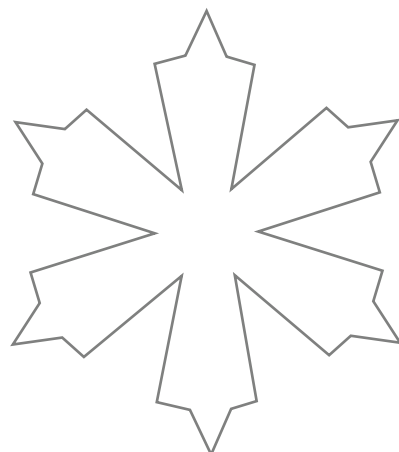
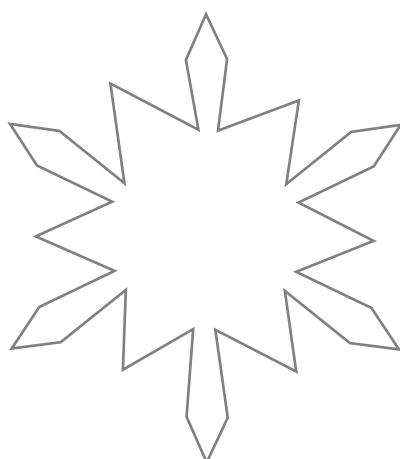
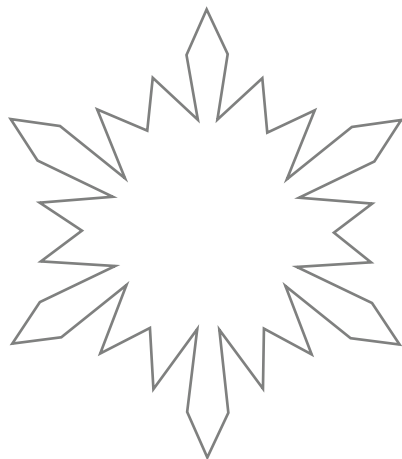
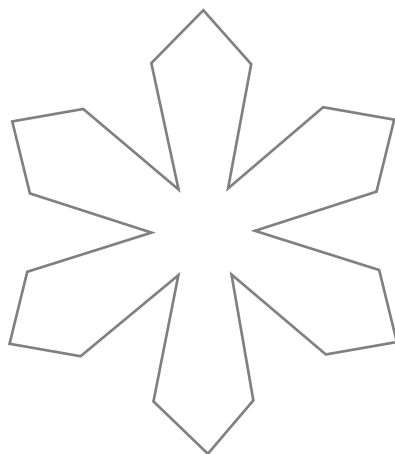
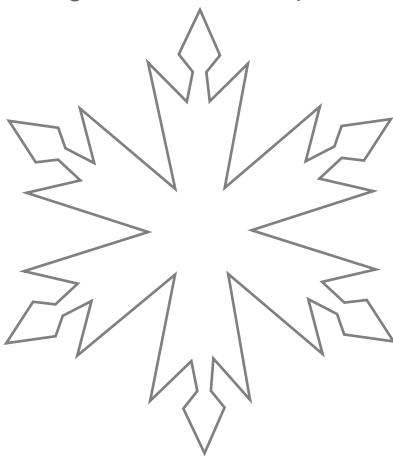
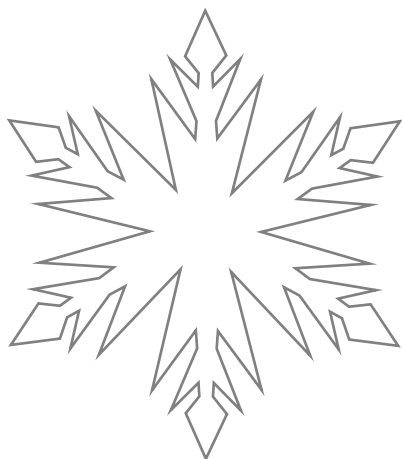


## Elsa Papercraft

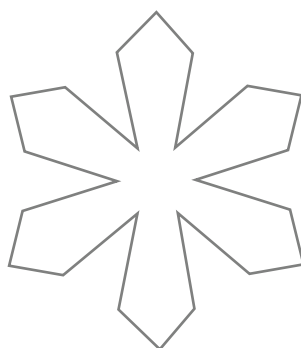
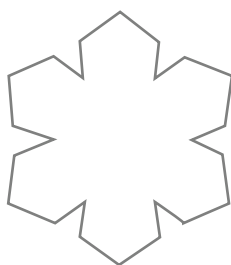
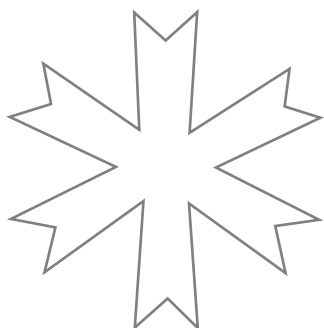
### Instructions

1. Print the template on regular paper or cardstock. Cut out each piece with a craft knife or scissors. Do not cut along the dashed lines -- this is where you will fold the paper.
2. Line up Elsa's back with her torso and glue them together so the design is two-sided. After the glue has dried, fold the bottom part of Elsa's torso towards you along the blue dashed line. Then, fold Elsa's face away from you along the gold line across her shoulders.
3. Take Elsa's chest piece and fold along each dashed line. Make each fold away from you. Glue the G tab and F tab to the back, white side of Elsa's chest.
4. Spread glue on the H tab of Elsa's chest and press it into place on the H area on Elsa's torso. Make sure her shoulders are lined up correctly.
5. After the glue dries, add glue to the I, J, K, and L tabs and press them into place. Hold the pieces together until the glue dries. You may need to use a pen or pencil inside her chest area to position the tabs just right.
6. Fold each of Elsa's arms and glue them so the design is two-sided. Make sure they are lined up before the glue dries. Attach the arms to each side of Elsa's body under each shoulder by gluing the E tab to the E area and D tab to the D area.
7. Cut slits in the top of the skirt along the white lines, opposite of where you fold each A tab. Fold each of the dashed lines at the top of the skirt and each A tab away from you. Starting from left to right with the purple side of the skirt facing you, glue each A tab to the back of the skirt piece next to it to create pleats.
8. When you are finished gluing the A tabs you may find it easier to glue the C tab to the inside of the skirt before gluing the final B tab pleat.
9. Attach Elsa's completed torso to her skirt by gluing the white side of the tabs at her waist to the top of the skirt over the areas labeled M and N. The crease on the skirt should be in the back.
10. Fold the snowflakes and glue them so the design is double-sided. Glue them to the very end to Elsa's outstretched palm.
11. Lastly, you can add Elsa's sparkly cape by using blue glitter tulle about 9 inches long and 5 inches wide. Cut the tulle into the shape of a balloon with one end 2 inches wide, and the other end 5 inches wide, keeping it 9 inches long from one end to the other. Glue the edges of the 2 inch end around the top edge of her dress along her back and sides under the arms.

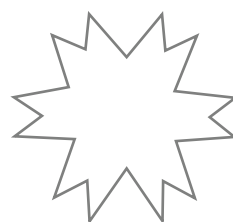
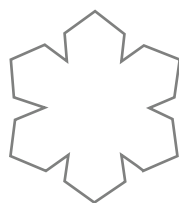
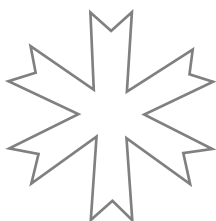
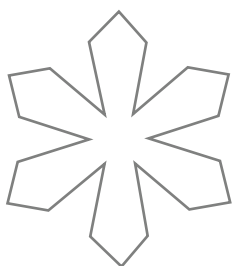
large snowflake templates



medium snowflake templates



small snowflake templates







## Elsa's Snowflake Hair Barrettes Template

### You'll need

White glittered felt  
Purple felt  
Light blue felt  
Small blue and purple rhinestones  
Bobby pins large and small or barrettes of your choice  
Hot glue or craft glue (hot glue should be used by adults only)  
Scissors

### Instructions

1. Print and cut out the snowflake templates you would like to use.
2. Choose a large snowflake template and trace it onto white glittered felt and cut it out. (Trace the snowflake on the backside of the glittered felt to prevent the ink or pencil from showing on the glittered side.)
3. You can choose a medium snowflake and/or small snowflake template to layer on top of the large snowflake. Trace them onto blue and purple felt. Mix and match your snowflakes alternating the colors.
4. Once your felt snowflakes are all cut out, assemble them with hot glue or craft glue. Add a rhinestone on the very top snowflake. Use hot glue or craft glue to glue them to a bobby pin or barrette of your choice. Allow the glue to fully dry before pinning them to hair.